

The Pool Pro's Guide to

ScreenLogic® Interfaces

for IntelliTouch® and EasyTouch® Automation Systems



One-touch control from anywhere, anytime



The Pool Pro's Guide to **ScreenLogic® Interface**



Introduction

To give your customers the latest in user-friendly, multi-functional pool and spa control options, and capture a larger share of the growing pool automation market, rely on IntelliTouch® and EasyTouch® systems with ScreenLogic® interfaces. No other technology package comes close in terms of ease of installation, ease of operation, options or capabilities.



As you may know, IntelliTouch and EasyTouch pool and spa automation systems are hailed as the most advanced in the industry. IntelliTouch and EasyTouch systems give your customers one-touch, centralized control over all pool and spa operations, as well as additional poolscape features, such as lights, spa jets, waterfalls and fountains. They are easy to install and the simplest to use. Straightforward menus allow pool owners to create and change programs without complicated routines.

The revolutionary ScreenLogic series of interfaces enables operation of IntelliTouch and EasyTouch through one or a combination of multi-functional controllers, including an in-wall touch screen, wireless digital tablets and desktop and laptop PCs. And now you can control your pool from your iPad®, iPhone® or iPod touch®—anywhere, anytime. All of these devices provide e-mail, web access and other digital capabilities while enabling control of the backyard retreat. In short, you not only add a “wow factor” to control systems, but provide even more automation features as well.

This booklet has been prepared to introduce you to the ScreenLogic Interfaces and other accessories for IntelliTouch and EasyTouch. In the interest of clarity, it's important to start with a review of the capabilities, features and options available with IntelliTouch and EasyTouch automation systems.

Mac™, iPad®, iPhone® and iPod touch® are trademarks and/or registered trademarks of Apple, Inc.

IntelliTouch System Overview

IntelliTouch systems involve three key elements:

1. First is the Enclosure installed at the pool equipment pad. This unit contains all the electrical circuitry needed to command and control various pool and yard accessories. Systems are available with a Load Center (containing a circuit breaker base) or a Power Center (no circuit breaker base). Both units include five 3HP relays.

IntelliTouch Load Center (P/N 521215)

IntelliTouch Load Center with IntelliChlor® Salt Chlorine Generator Transformer (P/N 521213)

IntelliTouch Power Center (P/N 521216)

IntelliTouch Power Center with IntelliChlor Transformer (P/N 521214)



2. Second is one of the “Personality Kits” selected based on whether the application involves controlling a separate pool or spa, a pool/spa combination with shared equipment, or a pool/spa combination with separate equipment. The Personality Kit determines the type and number of equipment and accessories IntelliTouch will control. In total, there are six IntelliTouch Personality Kits. Expansion Kits are available to control up to 40 separate pieces of equipment with any IntelliTouch system. See page 8 for details on individual systems.

Personality Kits include an outdoor control panel, up to four 3HP relays (depending on kit selected), two or three temperature sensors, and if the application is for a pool/spa combination, two valve actuators. See page 8 for a review of Personality Kit choices.



3. Third is the System Controller. Customers select from an indoor wall-mounted control panel, MobileTouch® wireless controller, In-Wall Touch Screen, or Standard PC or Mac™ interface. All devices can be mixed and matched and are compatible with your iPad, iPhone and iPod touch.

For an overview of all the available ScreenLogic interfaces, see page 10.



Photos show range of control devices available to interface with IntelliTouch systems—wired, wireless, push-button or touch screen—all are extremely easy to use.

EasyTouch System Overview

EasyTouch systems involve two key elements:

1. EasyTouch systems are available for separate pools and spas, as well as pool/spa combinations with shared equipment. You select from systems that control four or eight accessory functions. Four-function systems are typically used to control pool and/or spa operation plus pool and spa lights and heaters. Eight-function systems allow separate scheduling for additional features, such as landscape lighting, waterfalls, fountains, additional heater, pumps and more. Optional integration with the IntelliChlor salt chlorine generator is also available.

EasyTouch 4PSC Single Body with IntelliChlor Transformer (P/N 520592)

EasyTouch 4PSC Single Body with IntelliChlor Transformer (P/N 520593)

EasyTouch 8PSC Single Body with IntelliChlor Transformer (P/N 520704)

EasyTouch 8PSC Single Body with IntelliChlor Transformer (P/N 520705)

EasyTouch 4SC Pool/Spa with IntelliChlor Transformer (P/N 520542)

EasyTouch 4SC Pool/Spa with IntelliChlor Transformer (P/N 520543)

EasyTouch 8SC Pool/Spa with IntelliChlor Transformer (P/N 520544)

EasyTouch 8SC Pool/Spa with IntelliChlor Transformer (P/N 520545)

EasyTouch 8SC Pool/Spa with IntelliChlor Transformer (P/N 521150)

EasyTouch 4P Single Body without IntelliChlor Transformer (P/N 520591)

EasyTouch 8P Single Body without IntelliChlor Transformer (P/N 520703)

EasyTouch 4 Pool/Spa without IntelliChlor Transformer (P/N 520538)

EasyTouch 8 Pool/Spa without IntelliChlor Transformer (P/N 520540)

2. Second is the System Controller. Customers select from an indoor wall-mounted control panel, wireless controller, QuickTouch® II Wireless Remote, iS4 Spa-side Remote, SpaCommand™, Mudbox Accessory for SpaCommand, In-Wall Touch Screen, or Standard PC or Mac interface. All devices can be mixed and matched and are compatible with your iPad, iPhone and iPod touch.



Photos show range of control devices available to interface with EasyTouch systems—wired, wireless, push-button or touch screen—all are extremely easy to use.

Sales and Service Tools to Make Your Job Easier

To help you market IntelliTouch systems more effectively, complete customer and staff training requirements, and simplify service, we've developed a number of helpful tools.

IntelliTouch Indoor Control Panel POP Display

This non-functional panel makes sure all of your sales personnel have a simple device to introduce and explain the values and advantages of IntelliTouch systems. Intended for display purposes only. (P/N 520456)



IntelliTouch Control Panel Demo Unit

This fully functional indoor control panel provides a live demonstration of all IntelliTouch capabilities by enabling your staff to move through all screens your customer would access. (P/N 520352)



Customer Name	Adapter Version	Model	Firmware	Air Temp	Pool Pump	Pool Set Point	Pool Actual Temp	Pool Heat Mode	Spa Pump	Spa Set Point	Spa Actual Temp	Spa Heat Mode	Spa Side Remote	Lights On / Total	IntelliFlo Present	Alarms	Salt Level (ppm)	Pool Chlorine Output	Spa Chlorine Output
Jim MacCallum	5.2.601	System i5+3 / IntelliChlor IC40	1.160	88 F	Off	86 F	86 F	Off	Off	94 F	94 F	Off	Enabled	0 / 2	Yes	None	3350	IC	IC
David MacCallum	5.2.601	System i5+3 / IntelliChlor-50	1.160	89 F	On	87 F	84 F	Solar Only	Off	97 F	79 F	Off	Enabled	0 / 7	Yes	None	3750	IC	IC
Jan Wight	POOL: 4.0 Build 1499	EasyTouch2	2.090	108 F	On	78 F	88 F	Heater	Off	99 F	-	Heater	Enabled	-	Yes	None	-	-	-
Joe Smart	POOL: 4.0 Build 1499	System i7+3 / IntelliChlor IC40	1.110	119 F	On	50 F	90 F	Off	Off	102 F	102 F	Heater	Disabled	-	Yes	1	3650	80%	51
Kenneth Perry	POOL: 5.2 Build 582	EasyTouch2 8 / IntelliChlor IC40	2.090	109 F	On	77 F	81 F	Off	Off	100 F	-	Off	Disabled	0 / 3	Yes	None	3350	70%	21
Dennis Lundberg	POOL: 5.2 Build 601	EasyTouch2 8	2.090	85 F	On	86 F	85 F	Solar Only	Off	96 F	97 F	Heater	Disabled	0 / 2	Yes	2	4300	IC	IC
Michael Smith	POOL: 5.2 Build 601	System i5+3 / IntelliChlor IC40	1.160	85 F	On	82 F	85 F	Off	Off	100 F	101 F	Heater	Disabled	0 / 5	Yes	None	3650	IC	IC
Bill Moine	POOL: 5.2 Build 601	System i5+3 / IntelliChlor IC40	1.160	83 F	On	82 F	82 F	Off	Off	100 F	-	Heater	Disabled	0 / 3	Yes	1	0	IC	IC

Remote Control and Monitoring Software for the Service Technician

Now, working through the Internet, you can remotely monitor system and equipment conditions and diagnose problems; then log in using the advanced ScreenLogic interface to make system changes if needed. This option is ideal for any service professional, particularly those with large customer territories. Handle questions or a concern without a site visit and save your time and your fuel while providing top-notch customer service.

Download for free from the Pentair Water Pool and Spa® ("Pentair") website at: www.pentairpool.com/pool-owner/resources/downloads/screenlogic2.htm. Requires an existing ScreenLogic installation to connect.

Works with SunTouch®, EasyTouch and IntelliTouch controllers. EasyTouch and IntelliTouch support remote monitoring and control, while SunTouch® only supports remote monitoring.

Computer screen photo shows complete system status for every customer with an IntelliTouch, EasyTouch or SunTouch system. Conditions requiring attention are quickly identified and often corrected from the comfort of your office. Just point and click to turn equipment on and off, or change programs and schedules. Proactively dispatch your service personnel to the site if necessary.

IntelliTouch Service Panel

This tool is used when access to the indoor control panel is not available. It's used by service personnel to help set up, customize or troubleshoot a system at the Load or Power Center. Includes an attached 6-foot cable for easy connection to the Personality Board in the Load or Power Center. [\(P/N 520396\)](#)



IntelliTouch and EasyTouch Laptop Trainers

Perfect for use in a showroom or by sales personnel to demonstrate system functionality. It is recommended that training staff switch to using this model instead of the smaller demo unit shown at left when possible.

IntelliTouch Laptop Trainer [\(P/N 520400\)](#)

EasyTouch Laptop Trainer [\(P/N 520660\)](#)

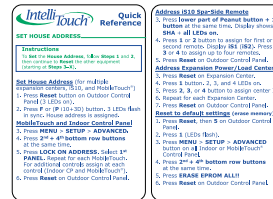


IntelliTouch and EasyTouch Quick Reference Cards

This two-sided credit card sized reference guide includes step-by-step instructions to set a house address for Indoor and MobileTouch control panels, Spa-Side Remote, and Expansion Load or Power Center.

IntelliTouch Quick Reference Card [\(P/N 520461\)](#)

EasyTouch Quick Reference Card [\(P/N 520917\)](#)



PH	ORP	Acid Tank Level	Chlorine Tank Level	Water Balance	Status
7.42	720	50%	-	-0.43	Connected OK
7.35	695	66%	-	-0.16	Connected OK
.	Connected OK
.	Connected OK
7.41	669	33%	.	0.05	Connected OK
7.60	705	100%	.	0.04	Connected OK
7.52	650	50%	0%	-0.24	Connected OK

ce Pro



IntelliTouch Products Review

On the following pages is a review of IntelliTouch system options along with part numbers for easy reference.



Systems for Pool & Spa Combinations with Shared Equipment

These systems include motorized valves that separate water flow between the pool and spa.

i5+3 Personality Kit (P/N 521219)

i7+3 Personality Kit (P/N 521220)

i9+3 Personality Kit (P/N 521221)

All kits include:

- Outdoor Control Panel
- Up to four 3HP relays (depending on Personality Kit selected)
- Two Temperature Sensors
- Two Valve Actuators



Systems for Pool & Spa with Dual Equipment

The i10+3D system provides advanced automation for a pool and spa with two separate sets of equipment. It controls 10 pump and/or lighting circuits and two heaters.

i10+3D Personality Kit (P/N 521222)

Kit includes:

- Outdoor Control Panel
- Three Temperature Sensors
- Five 3HP Relays

NOTE: the i10+3D requires Load Center (P/N 521213 or 521215) or Power Center (P/N 521214 or 521216). Both include five 3HP relays.



Systems for Pool Only or Spa (Single Body of Water)

The i9+3S and i5+3S systems provide advanced automation for a single body of water:

i5+3S Personality Kit (P/N 521223)

i9+3S Personality Kit (P/N 521224)

Both kits include:

- Outdoor Control Panel
- Up to four 3HP relays (depending on Personality Kit)
- Two Temperature Sensors



Expansion Units

Two IntelliTouch Expansion Kits offer up to 10 additional auxiliary circuits for i9+3, i9+3S and i10+3D systems. Each Expansion Kit requires a Load Center or Power Center. Expansion Kits and Load/Power Centers can be combined for enlarging systems to include up to 38 auxiliary circuits.



5 Circuit Model—i5X Expansion Kit with five auxiliary circuits (P/N 521225)

Includes:

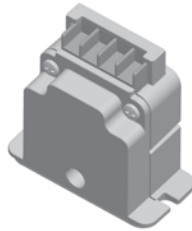
- Outdoor Control Panel (includes Motherboard and Personality Board)



10 Circuit Model—i10X Expansion Kit with 10 auxiliary circuits (P/N 521226)

Includes:

- Outdoor Control Panel (includes Motherboard and Personality Board)
- Five 3HP relays



Dimmer Module: enables dimming incandescent pool lights up to eight levels. (P/N 520406)



Adapter to Other Home Automation Systems:

this device allows homeowners to control IntelliTouch basic features through home automation systems manufactured by Crestron®, AMX®, Control4®, Vantage®, Lutron® and others. (P/N 520442)



Dual Heater Kit: enables pool owners to use a gas heater and a heat pump. Once installed, this kit enables IntelliTouch to select the right heat source for current conditions. (P/N 520403)

Crestron® is a registered trademark of Crestron Electronics, Inc., AMX® is a registered trademark of AMX LLC, LTC, Control4® is a registered trademark of Control4 Corporation, Vantage® is a registered trademark of Vantage Controls, Inc., and Lutron® is a registered trademark of Lutron Electronics, Co., Inc.

EasyTouch and IntelliTouch Compatible Products

SpaCommand™ I10-Function

Spa-Side Remote: installs recessed in deck or tile or available surface-mounted. Controls any 10 items, such as spa, jets, spa lights, pool lights, air blower, fiber optic lighting, colored lighting wheels, water features, etc. (P/N Various)



iS4 4-Function Spa-Side Remote:

installs in deck or tile and controls any four items, such as spa, jets, spa lights or pool lights. LED lamp indicates Heating and Spa modes. (P/N: Various)



QuickTouch® II Handheld

Wireless Remote: controls any four items/functions, such as spa, jets, spa lights and pool lights. (P/N 521209)



ScreenLogic Interfaces Overview

ScreenLogic interfaces were developed to meet growing consumer demand for home automation tools that are more capable and intuitive. By combining the ability to run an IntelliTouch or EasyTouch system and have e-mail, web access and other digital capabilities, ScreenLogic interfaces meet the need.

One or more of the following ScreenLogic interfaces can be used with IntelliTouch or EasyTouch systems. Note that multiple devices can be mixed and matched throughout the home to provide customers with the ultimate in convenient control.

An additional benefit is that all ScreenLogic systems can be upgraded to become an entire home automation system, including HVAC, lighting, home audio, irrigation and much more.

iTC35 Kit: includes In-Wall Color Touch Screen with Ethernet (RJ45) connection and the Protocol Interface Adapter: [\(P/N 520502\)](#)



iTC15 Kit: includes a Protocol Interface Adapter that connects to existing desktop or laptop PC or Mac computers. This allows control of IntelliTouch or EasyTouch pool/spa systems not only with your iPad, iPhone or iPod touch, but also via PC (requires available Ethernet connection), using a Windows® XP operating system and Pentium® 4 PC, or Mac computer: [\(P/N 520500\)](#)

MobileTouch Wireless Controller: this optional wireless control device allows any IntelliTouch system to have a wireless remote with all the capabilities of the Indoor Control Panel shown on page 3. With an average range of 500 feet, pool owners have system control anywhere around the home or yard. Powered by a rechargeable battery, it includes an AC adapter and charging cradle. [\(P/N 520906\)](#)

Windows® is a registered trademark of Microsoft Corporation and Pentium® is a registered trademark of Intel Corporation.

Note: A mixture of up to four ScreenLogic controllers and additional standard controllers can be used with any IntelliTouch system.



ScreenLogic Interface

ScreenLogic interfaces feature color touch screens that are easy to read and easy to use. They provide the “one touch” convenience for which IntelliTouch systems are known. Here are several sample screens to illustrate the simple, intuitive and powerful functionality these devices add to the IntelliTouch system.

The simplicity and high technology designed into IntelliTouch systems using ScreenLogic interfaces is unlike anything on the market. The range of capabilities provides tremendous added value to your customers who want to embrace the most sophisticated digital automation products available.



The IntelliFlo interface enables the IntelliTouch system to act as the master controller for up to four IntelliFlo Variable Speed pumps, eight IntelliFlo VF pumps, or combinations of both (maximum of four VS-3050 models).



The IntelliChem™ interface enables customers to monitor their pH and sanitizing levels from their controller, rather than visiting the equipment pad. Compatible with Pentair's IntelliChlor salt chlorine generators, liquid feed pumps and CO₂ systems.



The Configure Swimming Colors screen displays control options for pool and spa lighting, as well as advanced configuration for IntelliBrite® 5g, SAm®, SAL® and FIBERworks® color lighting and landscape systems. It also allows control over advanced configurations for Color Set™, Color Swim™ and Color Sync™ lighting programs.



The Schedule screen shows circuit start and stop times to manage lights, heaters, spa jets and filter pumps.

Features and options to enhance the convenience and capabilities of IntelliTouch and EasyTouch for you and your customers

Remote Access: ScreenLogic allows users to remotely control their IntelliTouch or EasyTouch system over the Internet.

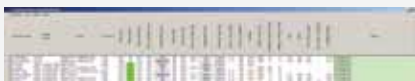
An **Interface for IntelliChem pH/ORP Control Systems** and the **IntelliChlor Salt Chlorine Generator** enables customers to monitor their chlorinator from their controller rather than visiting the equipment pad. Standard feature.



Remote Control and Monitoring System for Service Professionals:

an exclusive software program that allows service personnel to remotely monitor, access, program and control customers' Pentair Water Pool and Spa automation systems. Ideal for those with a large service area or customer base. Eliminates the lost time and fuel expense of many site visits, particularly for "false alarms" from your more challenging pool owners. Compatible with SunTouch, EasyTouch and IntelliTouch. See pages 6 and 7 for more information.

Note: Requires homeowner to have an "always on" (broadband) Internet connection.



Note: EasyTouch and IntelliTouch support remote monitoring and control while SunTouch only supports remote monitoring.

Interfaces for IntelliFlo[®] vF and IntelliFlo[®] Variable Speed Pumps: any ScreenLogic interface can be used to enable the IntelliTouch system to act as the master controller for up to four IntelliFlo Variable Speed pumps, eight IntelliFlo vF pumps, or combinations of both pumps. Link and control all pump functions and other pool equipment and accessories from a central control station without the need for expensive pump relays. Standard feature.



E-mail Alerts: feature generates an e-mail message if a potentially damaging condition occurs or equipment needs attention, for example; the chlorine generator reports low salt conditions, or error messages are sent from the IntelliFlo vF and IntelliFlo Variable Speed pumps. Standard feature.



ScreenLogic Wireless Connection Kit: this kit allows the installer to eliminate a 4-conductor, 22-gauge wire from the load center into the house—the best solution when hard-wiring is impractical or impossible. [\(P/N 520639\)](#)



EasyTouch Part Numbers

Part #	Description	
--------	-------------	--

EasyTouch Systems with IntelliChlor Transformer and IntelliChlor Cell

520592	EasyTouch 4PSC-IC20	Single body (includes salt chlorine generator integration & IC20 cell)
520593	EasyTouch 4PSC-IC40	Single body (includes salt chlorine generator integration & IC40 cell)
520704	EasyTouch 8PSC-IC20	Single body (includes salt chlorine generator integration & IC20 cell)
520705	EasyTouch 8PSC-IC40	Single body (includes salt chlorine generator integration & IC40 cell)
520542	EasyTouch 4SC-IC20	Pool/Spa (includes salt chlorine generator integration & IC20 cell, 2 actuators)
520543	EasyTouch 4SC-IC40	Pool/Spa (includes salt chlorine generator integration & IC40 cell, 2 actuators)
520544	EasyTouch 8SC-IC20	Pool/Spa (includes salt chlorine generator integration & IC20 cell, 2 actuators)
520545	EasyTouch 8SC-IC40	Pool/Spa (includes salt chlorine generator integration & IC40 cell, 2 actuators)
521150	EasyTouch 8SC-IC60	Pool/Spa (includes salt chlorine generator integration & IC60 cell, 2 actuators)

EasyTouch Systems without IntelliChlor Transformer Built-in

520591	EasyTouch 4P	Single body (base system-no indoor control panel, no actuators)
520703	EasyTouch 8P	Single body (base system-no indoor control panel, no actuators)
520538	EasyTouch 4	Pool/Spa (base system-no indoor control panel, 2 actuators)
520540	EasyTouch 8	Pool/Spa (base system-no indoor control panel, 2 actuators)

EasyTouch Systems for Canada

520914	EasyTouch 4P-C	Single body (salt ready system-cell must be ordered separately)
520915	EasyTouch 8-C	Pool/Spa (salt ready system-cell must be ordered separately)

Part #	Description	Part #	Description
--------	-------------	--------	-------------

Accessories

563045	Valve Actuator
520198	Two-Speed 3 HP Relay
520199	1,000' cable, four conductor, 22 AWG
520272	Temperature Sensor
520546	EasyTouch Wireless Controller for 4 Circuit Systems
520547	EasyTouch Wireless Controller for 8 Circuit Systems
520548	EasyTouch Indoor Control Panel for 4 Circuit Systems
520549	EasyTouch Indoor Control Panel for 8 Circuit Systems
520588	IntelliChlor Pass-through Cell for Winter or startup
520594	IntelliChlor Diagnostic Wand
520670	IntelliChlor Acid/Cleaning Kit (contains closed end union cap, o-ring, & coupling nut)
520734	IntelliChlor 15' extension power cord
520818	COM Port Expansion Module with 1' cable
520967	Light Direct Connect Kit (eliminates need for j-box)
520092	iS4 Remote (white) 100' cable
521176	SpaCommand (black) 150' cable
521177	SpaCommand (black) 250' cable
521178	SpaCommand (white) 150' cable
521179	SpaCommand (white) 250' cable
521180	SpaCommand Mudbox Accessory
521209	QuickTouch II Wireless Remote
A1101	Surge Suppressor for 115v Transformer Wiring
A1201	Surge Suppressor for 230v Transformer Wiring
ES03	Emergency Shut-Off Switch w/Audible Alarm
RCSI	Additional Spa Jets Switch (for multiple jet pumps)

Replacement Parts

520108	Terminal Screw 4 wire
520124	Label set for QuickTouch Wireless Remote
520217	Antenna, EasyTouch Transceiver Module

Replacement Parts continued

520341	EasyTouch Transceiver Circuit Board with attached antenna
520595	IntelliChlor Replacement Unions (contains 2 o-rings, 2 couplers, 2 nuts)
520651	High Voltage Cover Panel
520652	Indoor Control Panel Backplate with Connectors Attached
520653	Transformer Assembly
520655	Load Center Door
520656	Outdoor Control Panel
520658	Indoor Control Panel & Wireless Remote Features Label (set of 10)
520657	UOC Motherboard with 8 Aux (Pool & Spa)
520659	UOC Motherboard with 4 Aux (Pool & Spa)
520660	LapTop Trainer
520691	EasyTouch Wireless Remote, 4 Aux.
520692	EasyTouch Wireless Remote, 8 Aux.
520711	UOC Motherboard with 8 Aux (Single Body)
520712	UOC Motherboard with 4 Aux (Single Body)
520722	IntelliChlor Transformer Replacement
520723	IntelliChlor PCBA Replacement for EasyTouch SCG Systems
520724	PWR Cable for IntelliChlor SCG Systems
520736	IntelliChlor Flow Switch replacement kit
521218	New Load center IntelliChlor SCG Surge Board PCBA
521227	New Load Center Door w/ET and IT Labels
521232	New LC ET OCP Bezel
521233	New Load Center XFMR
521441	IntelliChlor Transformer Replacement
520151Z	Kit BKT MTG LC & PC
520714Z	SCG Resettable IOA Circuit Breaker
521051Z	New Load Center High Voltage Cover Panel
521057Z	Asy New Load Center 150A 10 Circuit Breaker Base
521081Z	Kit LC Door Latch
521142Z	SCG Resettable 12A 50 volt Circuit Breaker

IntelliTouch Part Numbers

The IntelliTouch ordering process is a three-step process:

Part #	Description	Part #	Description
Step 1: Choose the Enclosure		Spa-Side Remotes	
521213	Load Center with IntelliChlor Transformer	520090	iS4 4-Function Spa-Side Remote (white) 50' cable
521214	Power Center with IntelliChlor Transformer	520091	iS4 4-Function Spa-Side Remote (gray) 50' cable
521215	Load Center without IntelliChlor Transformer	520092	iS4 4-Function Spa-Side Remote (white) 100' cable
521216	Power Center without IntelliChlor Transformer	520093	iS4 4-Function Spa-Side Remote (gray) 100' cable
Step 2: Choose the Personality Kit		520094	iS4 4-Function Spa-Side Remote (white) 150' cable
521219	i5+3 Personality Kit for pool/spa—shared equipment	520095	iS4 4-Function Spa-Side Remote (gray) 150' cable
521223	i5+3S Personality Kit for pool only or spa only	520256	iS4 4-Function Spa-Side Remote (black) 50' cable
521220	i7+3 Personality Kit for pool/spa—shared equipment	520257	iS4 4-Function Spa-Side Remote (black) 100' cable
521224	i9+3S Personality Kit for pool only or spa only	520258	iS4 4-Function Spa-Side Remote (black) 150' cable
521221	i9+3 Personality Kit for pool/spa—shared equipment	521176	SpaCommand (black) 150' cable
521222	i10+3D Personality Kit for pool/spa—dual equipment	521177	SpaCommand (black) 250' cable
Step 3: Choose the Interface(s)—(multiple interface kits can be used)		521178	SpaCommand (white) 150' cable
520138	Indoor Control Panel: Monochrome backlit LCD control panel. Connects to Personality Board in Load Center. Up to four can be used per system.	521179	SpaCommand (white) 250' cable
520500	PC or Mac Interface: Includes Protocol Interface Adapter that connects to an existing desktop or laptop PC. This allows control of IntelliTouch pool and spa systems via PC (requires PC with an Ethernet connection, Windows XP operating system, and Pentium 4 PC) or Mac.	521180	SpaCommand Mudbox Accessory
520502	In-Wall Touch Screen: Includes In-Wall Color-Touch Screen with an Ethernet (RJ45) connection and a Protocol Interface Adapter. The touch screen is custom configured for IntelliTouch systems.	Additional ScreenLogic Interfaces:	
520906	MobileTouch Wireless Remote: MobileTouch wireless control with Transceiver.	You can use up to four ScreenLogic interfaces with your IntelliTouch pool and spa control system. This includes any combination of the ScreenLogic kits listed to the left including PC or Mac Interface, or In-Wall. Once you purchase one ScreenLogic kit, you can purchase additional ScreenLogic interfaces.	
Expansion Kits		520498	In-Wall Touch Screen (Accessory only—does not include Protocol Adapter or wireless router).
521226	i10X Expansion Kit, 10 Auxiliary. Requires additional Load or Power Center (521215 or 521216)	IntelliTouch Accessories	
521225	i5X Expansion Kit, 5 Auxiliary. Requires additional Load or Power Center (521215 or 521216)	263045	Valve Actuator
		520106	3HP Relay for IntelliTouch
		520138	Indoor Control Panel for IntelliTouch (white), additional
		520148	QuickTouch 4-Function Wireless Remote Kit for IntelliTouch
		520198	Two-Speed 3HP Relay
		520199	1000' Cable Four-Conductor, 22 AWG
		520285	Valve Module for additional three valve actuators
		520403	Dual Heater Kit for IntelliTouch
		520442	IntelliTouch i-Link Protocol Interface Adapter for Home Automation Interface
		520639	ScreenLogic Wireless Connection Kit
		6870002	Telephone Remote Control for any single circuit, usually Spa mode
		AI101	Surge Suppressor for 115V transformer wiring
		AI201	Surge Suppressor for 230V transformer wiring

Part #	Description	Part #	Description
Wireless Remote Replacement Parts		IntelliTouch Replacement Parts continued	
520191	Transformer AC Adapter for MobileTouch 1	520287	Circuit Board, Universal Outdoor Controller (Motherboard)
520206	Replacement Antenna for MobileTouch 1 Hand-Held Controller	520296Z	Circuit Board, i5+3S Personality
520217	Antenna for MobileTouch 1 Transceiver	520302	Outdoor Control Panel Bezel, i5x, i10x
520244	MobileTouch 1 & 2 Transceiver Enclosure with mounting hardware	520303	Outdoor Control Panel Bezel, i10+3D
520341	MobileTouch 1 Transceiver Circuit Board with attached antenna	520304	Outdoor Control Panel Bezel, i5+3S, i9+3S
520907	MobileTouch 2 Wireless Hand-held Controller Only	520342	Replacement Transformer Assembly, IntelliTouch
520946Z	MobileTouch 2 Transceiver Circuit Board w/ integrated antenna	520405	IntelliTouch Load Center Replacement Door
520803Z	MobileTouch 2 Transformer	520108	Terminal Screw 4 wire
520834Z	MobileTouch 2 Charging Center Cradle	520343	iS10 Mounting Kit
520815Z	MobileTouch 2 Battery	520344	iS10 Label Set (Qty 10)
520946Z	MobileTouch 2 Transceiver Circuit Board w/attached antenna	520724	PWR Cable for IntelliChlor SCG Systems
IntelliTouch Sales Tools		521218	New Load center IntelliChlor SCG Surge Board PCBA
520396	IntelliTouch Service Control Panel	521227	New Load Center Door w/ET and IT Labels
520352	IntelliTouch Control Panel Demo Unit	521228	New OCP Bezel, i5+3, i7, i9+3
520400	IntelliTouch Laptop Trainer	521229	New OCP Bezel, i10+3D
520456	IntelliTouch Indoor Control Panel POP Display	521230	New OCP Bezel, i5+3S, i9+3S
520461	IntelliTouch Quick Reference Card	521231	New OCP Bezel, i5X, i10X
IntelliTouch Replacement Parts		521233	New Load Center XFMR
520062	Outdoor Control Panel Bezel, i5+3, i7, i9+3	521441	IntelliChlor Transformer Replacement
520077Z	Circuit Board, i10+3D Personality	9321004	Clamp for Water Temp Sensor
520078Z	Circuit Board, i19+3S Personality	520119Z	Old Load Center High Voltage Cover Panel
520079Z	Circuit Board, i10X Personality	520151Z	Mounting Bracket Kit for LC & PC
520080Z	Circuit Board, i5X Personality	520296Z	Circuit Board, i5+3S
520173	iS4 Label Set (Qty. 10)	521051Z	New Load Center High Voltage Cover Panel
520265	Circuit Board, i5+3 Personality	521057Z	Asy New Load Center 150A 10 C/B Base
520266	Circuit Board, i7+3 Personality	521078Z	New Power Center High Voltage Cover Panel
520267	Circuit Board, i9+3 Personality	521081Z	Kit LC Door Latch
520272	Temperature Sensor, 10K Thermistor for water/air/solar; 20' cable	521142Z	SCG Resettable 12A 50 volt Circuit Breaker
520273	Cover Plate, IntelliTouch Indoor Control Panel (white)	BAT3	Battery, 3 volt Lithium
520276	Mounting Sheaves, IntelliTouch Indoor Control Panel	521500	SpaCommand Replacement Plastics
520277	Mounting Hardware, IntelliTouch Indoor Control Panel	521501	SpaCommand Replacement Cable 150'
520281	Breaker Base, IntelliTouch Load Center 4/8 Position	521502	SpaCommand Replacement Cable 250'
520283	Label Set for IntelliTouch Outdoor Control Panel (Qty. 10)	521503	SpaCommand Replacement Labels (Gray)
		521504	SpaCommand Replacement Labels (Black)

Learn more about ALL the automation options

from Pentair Water Pool and Spa®



Pentair also offers the popular IntelliTouch®, EasyTouch® and SunTouch® families of pool and spa automation systems. The result is a system at a price point for every one of your customers...with the highest quality, ease of use and variety of installation options available in the industry.

Now you can automate and adjust the sights and sounds of your water features while controlling the operation of all scheduled routines: filtration, cleaning, pool and landscape lights, spa operation, heating, and more...with the push of a button. No need to memorize operating sequences, open and close valves, or reset time clocks and thermostats. It's all done for you automatically. For the ultimate in convenience, indoor, spa-side and wireless remote control devices are also available. And now, new software is available to allow control access from your iPad®, iPhone® or iPod touch®.

For more information on IntelliTouch, EasyTouch or SunTouch systems, contact your Pentair Water Pool and Spa® representative today.



An Eco Select™ Brand Product

As Eco Select™ branded products, IntelliTouch, EasyTouch and SunTouch automation systems optimize energy use and equipment performance by automating and synchronizing equipment scheduling, while preventing problems and waste when users rely on their memories or limited time clocks to operate or deactivate equipment.



As the global leader in pool and spa equipment manufacturing, we strive to provide greener choices to our customers. We hope you'll join us in embracing more eco-friendly poolsides by choosing Eco Select brand products for your swimming pool.

Available from:



Pentair Pool Products® 800.831.7133
www.pentairpool.com
Sta-Rite® 800.831.7133
www.staritepool.com

pumps / filters / heaters / heat pumps / automation / lighting / cleaners / sanitizers / water features / maintenance products